

Revelation ODBC Driver for OpenInsight™

Installation Instructions

REVELATION
S O F T W A R E

COPYRIGHT NOTICE

© 1994-2005 Revelation Technologies, Inc. All rights reserved.

No part of this publication may be reproduced by any means, be it transmitted, transcribed, photocopied, stored in a retrieval system, or translated into any language in any form, without the written permission of Revelation Technologies, Inc.

SOFTWARE COPYRIGHT NOTICE

Your license agreement with Revelation Technologies, Inc. authorizes the conditions under which copies of the software can be made and the restrictions imposed on the computer system(s) on which they may be used. Any unauthorized duplication or use of any software product produced by Revelation Technologies, Inc., in whole or in part, in any manner, in print or an electronic storage-and-retrieval system, is strictly forbidden.

TRADEMARK NOTICE

OpenInsight is a registered trademark of Revelation Technologies, Inc.
Advanced Revelation is a registered trademark of Revelation Technologies, Inc.
OpenInsight for Workgroups is a registered trademark of Revelation Technologies, Inc.

Microsoft, MS, MS-DOS, and Windows are registered trademarks of Microsoft Corporation in the USA and other countries.

All other product names are trademarks or registered trademarks of their respective owners.

Table of Contents

CHAPTER 1: INTRODUCTION TO THE ODBC DRIVER	4
Installation Notes	4
CHAPTER 2: INSTALLING THE REVELATION ODBC DRIVER	5
Overview of the Driver Installation	5
Preparing for the Driver Installation Process	5
Executing the Driver Installation Process	6
CHAPTER 3: DATA SOURCE CONFIGURATION	7
Overview	7
Adding a Data Source	9
CHAPTER 4: REFERENCE NOTES	11

Chapter 1: Introduction to the ODBC Driver

Thank you for purchasing the Revelation ODBC Driver. The ODBC Driver makes it possible to access OpenInsight data from any other ODBC-compliant database. Currently the access is read-only. The Revelation ODBC Driver will only work on OpenInsight 7.1 or above.

Installation Notes

The Installation provides a fixed number of ODBC connections to the OpenInsight Database at any point in time. The driver needs to be installed on the workstations that will be accessing your OpenInsight databases using the ODBC-compliant database.

The name of the installed driver is REVODBC.DLL and it is always installed to WINSYSDIR.

Important:

To do the install you will need to obtain a key code from Revelation. To obtain the key code, you will need to email a copy of your OEngine to info@revelation.com as well as the Serial Number on the Revelation ODBC Driver box. You will then be provided with an authorization code. The authorization code will expire three days from when provided. You will not be able to complete the installation without the authorization code.

Chapter 2: Installing the Revelation ODBC Driver

This chapter describes how to install the Revelation ODBC Driver.

Overview of the Driver Installation

The following is an overview of the steps performed in installing the Revelation ODBC Driver. Detailed procedures follow this overview.

- Make sure that all users are logged out of the OpenInsight for Workgroups.
- Back up your OpenInsight for Workgroups runtime application.
- Check that your OpenInsight for Workgroups OEngine is write-enabled.
- Check that your file access rights on the operating system and on the network allow you to WRITE and CREATE files.
- Log in to your Network and run Windows.
- Run the Revelation ODBC Driver installation.
- Exit the installation software.
- Set up connection to a non-native database
- Back up the appropriate files that were altered by the installation.

Preparing for the Driver Installation Process

This procedure describes the important preparatory steps you need to take before performing the actual installation.

1. Confirm that you are using OpenInsight 7.1 or above.
2. Email Revelation at info@revelation.com to receive your Revelation ODBC Driver authorization code. You need to send:

Your OEngine.dll for OpenInsight 7.1 or greater.

These items are needed to create the authorization code that is unique to your installation. You will receive an authorization code that you will need to complete the install. The authorization code will expire three days after it has been created. If you do not complete your installation within three days of receiving the authorization code, you will lose any uninstalled licenses.

Executing the Driver Installation Process

This procedure installs the necessary files for this workstation to run an ODBC connection to non-Revelation-native databases.

1. Insert the Revelation ODBC Driver CD-Rom into your CD-Rom drive.
2. From your Windows menu Click START → RUN and type in

(Drive Letter):\Setup.exe
3. Click the OK button; the driver installation will begin.
4. You will be asked to point to the location of your OpenInsight Application. By default it will point to C:\Revsoft\OpenInsight. If this is not where your location of OpenInsight is located, please point to the proper directory.
5. At this point during the installation process you will be prompted for your authorization code. Please enter the code provided by Revelation Software. Please remember that you will only have three days from the issuance of the Authorization code to install the software.
6. When you are prompted for a password for the SYSPROG, you should use the default of no password. If you have password protected the SYSPROG account, you will need that information to successfully install the ODBC driver.

Chapter 3: Data Source Configuration

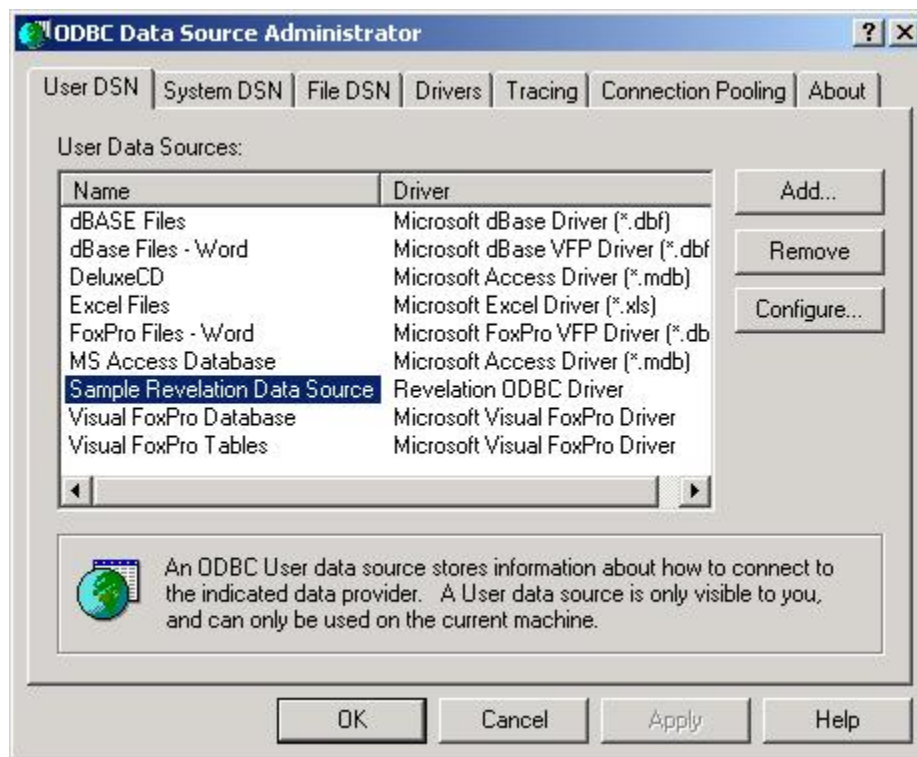
Overview

At this point the Revelation ODBC Driver has installed properly, but it still needs to be configured to run properly.

You need to find the ODBC Data Source Administrator on your workstation. Please refer to your Microsoft operating system documentation to find the location.

Once you are at the ODBC Data Source Administrator, you need to set up the connection by doing the following:

To see this after the installation used the ODBC Admin control panel applet to select the 'Sample Revelation Data Source' in the User DSN tab.



Click the Configure button to see the info for this DSN.



The prompts are:

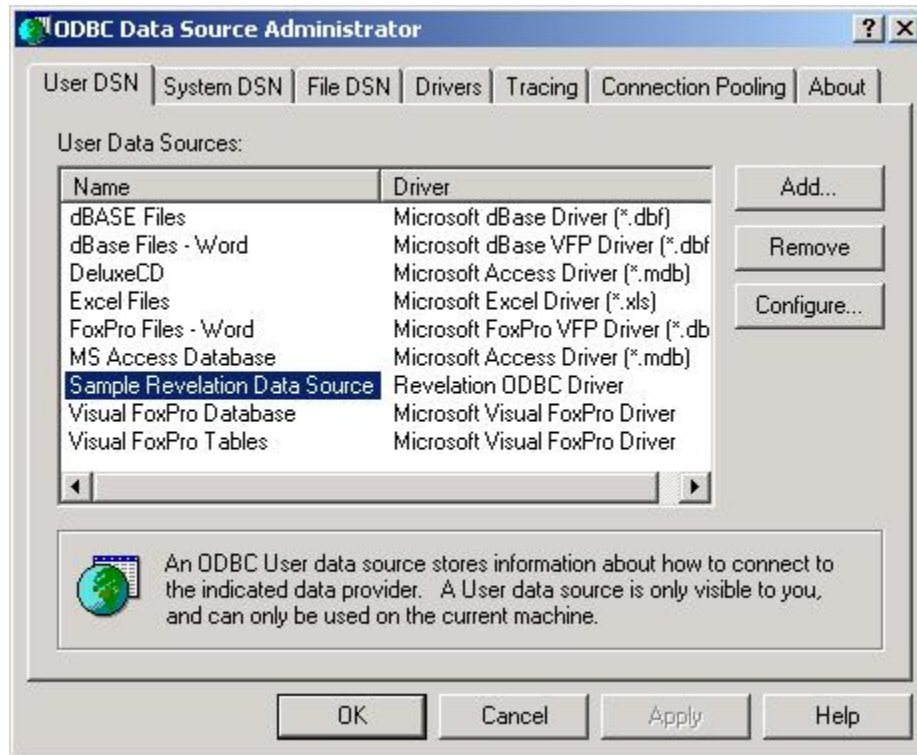
Prompt	Meaning/Action
DataSource	Name of the data source *REQUIRED
API Path	Path to the RevCAP32.DLL file to use to start the engine. Only the path should be entered here – NOT the RevCAPI file name. The folder button here launches a dialog that allows the user to select the folder. *REQUIRED
Servename	Same function as the /SN switch in OI. By default the Driver attempts to start an unnamed in-process engine.
User ID	Same as /UN in OI. SYSPROG is the default
Password	Same as /PW in OI
Show Engine	By default the driver hides the OE window – checking this box means that the engine will be visible during the ODBC session

The **About** button on this dialog shows the licensing information:

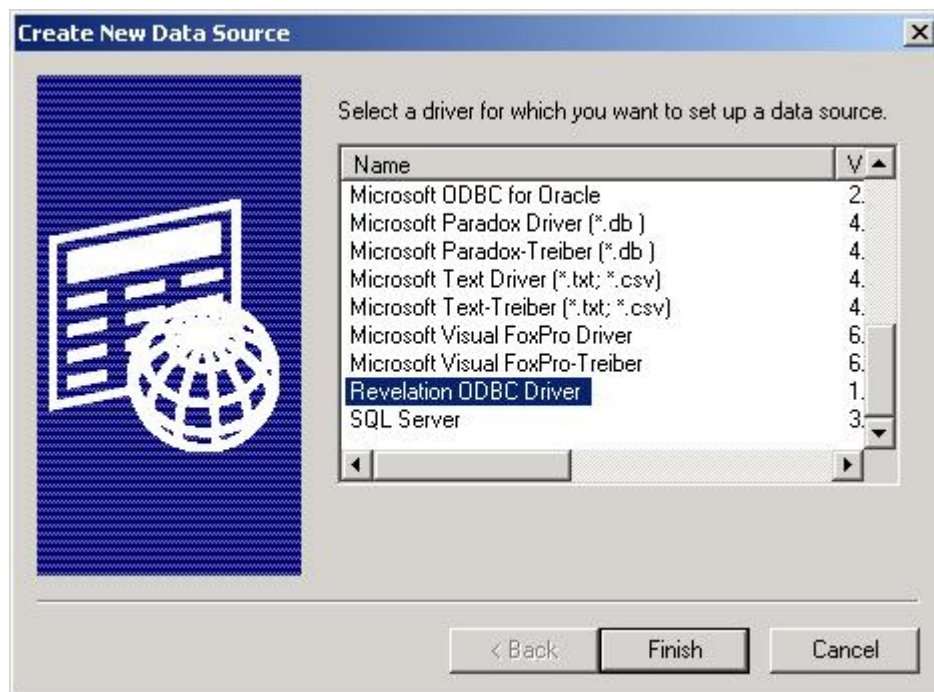


Adding a Data Source

In the Main ODBC Admin dialog click the Add button:

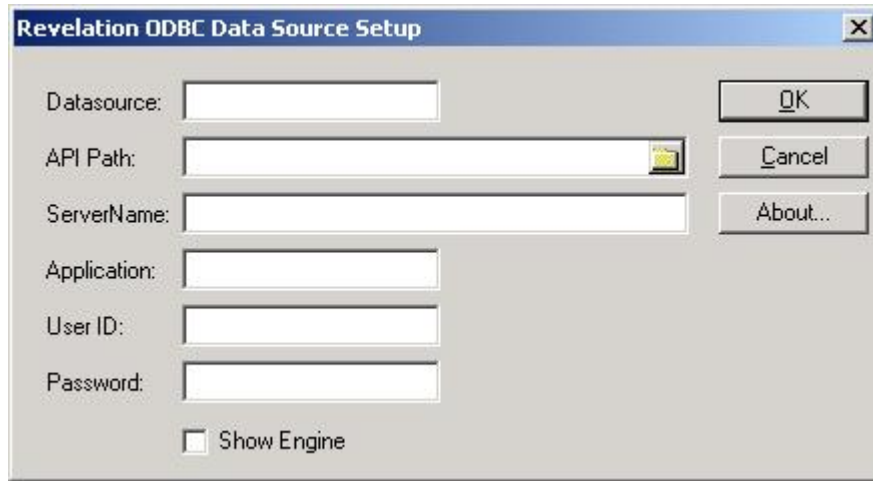


You'll see a dialog that lets you select the driver you wish to use for the data source:



Select 'Revelation ODBC Driver' from the list and click 'Finish'

You'll then be presented with the blank Revelation ODBC Data Source Setup dialog like so:



The image shows a Windows-style dialog box titled "Revelation ODBC Data Source Setup". It contains several input fields and buttons. The fields are: "Datasource:" (a text box), "API Path:" (a text box with a folder icon on the right), "ServerName:" (a text box), "Application:" (a text box), "User ID:" (a text box), and "Password:" (a text box). At the bottom left, there is a checkbox labeled "Show Engine". On the right side, there are three buttons: "OK", "Cancel", and "About...".

Fill in the prompts (Datasource and API Path are required) and click OK to save it.

Chapter 4: Reference Notes

- 1) The Installshield routine WILL install/update ODBC on the workstation if needed. The routine is based on the ODBC setup template supplied with IS 5.5
- 2) The actual driver (REVODBC.DLL) is always installed to WINSYSDIR
- 3) The installation routine also creates a sample ODBC datasource called 'Revelation Sample Data Source' which is configured to connect to the SYSPROG account.
- 4) With the installation the following Basic+ programs are installed to OpenInsight:

REVODBC
REVODBC_CATALOG
REVODBC_INSTALL
REVODBC_PARSE
REVODBC_SUB

REVELATION

S O F T W A R E

99 Kinderkamack Road
Suite 109, Westwood NJ, 07675
(201) 594-1422
(800) 262-4747
FAX (201) 722-9815
www.revelation.com

www.revsoft.co.uk

Revelation Software is a division of Revelation Technologies, Inc.

Part No. 112-680